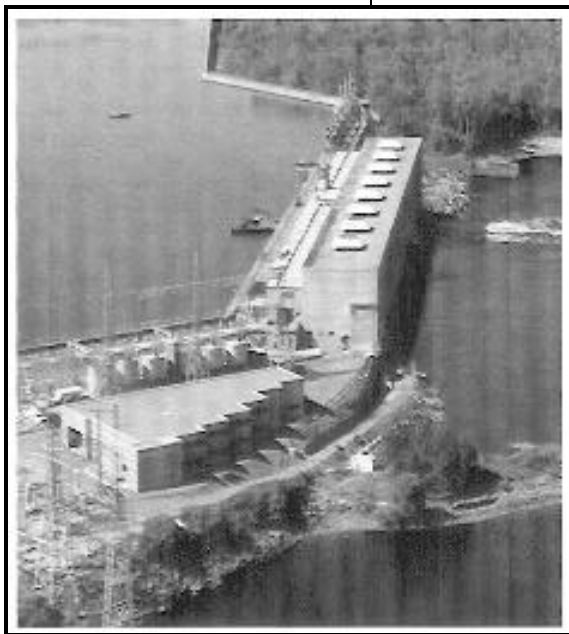


Chats Falls G.S. / Ontario

Originally planned and built by the Chats Falls Power Company, the eight units of Chats Falls G.S. were in operation in 1932. This 192,000 kilowatt station is now jointly owned by Ontario

Hydro and Hydro Quebec, and operated and maintained by Ontario Hydro.

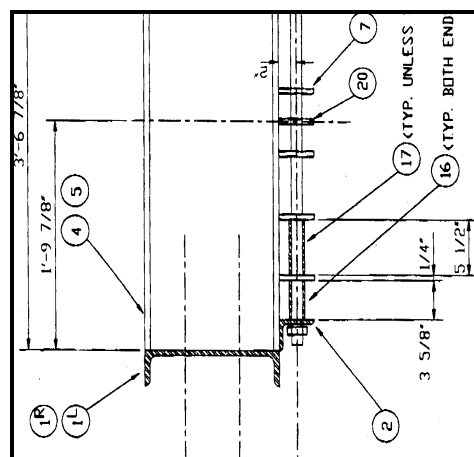


Typical for large plants of this type, the trashracks are mounted on frames stacked several high and slid into guide channels. The Chats Falls rack frames are made of steel and measure 13'-6" (4.1m) high x 16'-6" (5.0m) wide. Each intake bay has 9 of these framed rack sections.

Hydrothane has completed many installations where the trashracks are mounted on frames as shown to the right. It is suggested to weld either angle iron or channel steel on the sides of the frame. The horizontal tie bars of the Hydrothane trash racks are simply inserted through pre-drilled holes in angle iron or channel steel and bolted using the standard nylon end nut. U-Bolts or J-Bolts are used at intermediate points along the frame to assure a proper attachment to the frame itself.

Where the frame structure itself must be replaced, Hydrothane also offers high strength fiberglass frames. Not only does

this further reduce the weight of the structure but it also eliminates the possibility of corrosion.



Typical attachment to frame assembly using angle iron on the vertical edge of the frame.



Hydrothane Systems

1955 Corporate Drive
Pembroke, MA 02359
Tel: 781-829-6777
Fax: 781-829-6935
www.hydrothane.com